



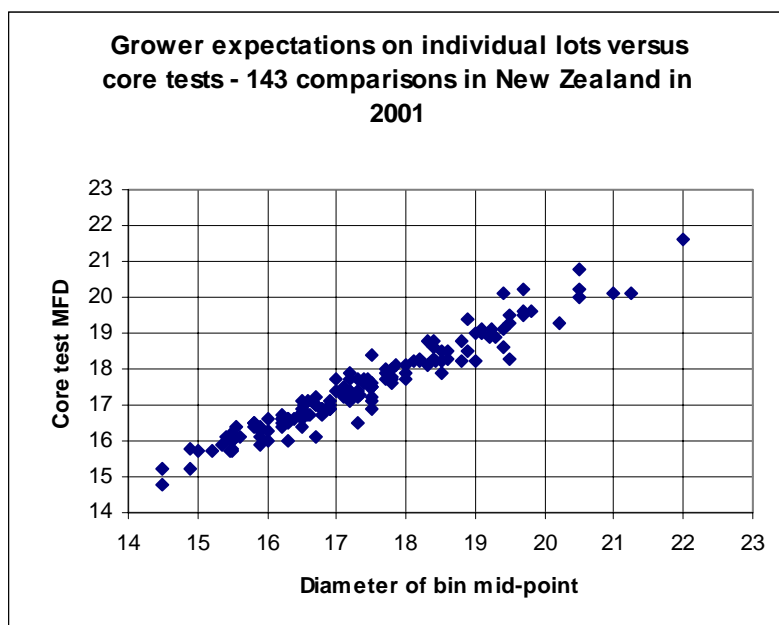
IWG BULLETIN

IWG BULLETIN Ref: 2000-4

Accuracy of the OFDA2000

Definition of Accuracy: How close you are on average to the reference or "true" result.

- Accuracy can be defined as how close you are on average to the reference or "true" result. In practice we must use IWTO core testing of a complete lot as the "true" result. However, because all individual results have a degree of random error associated with them, we have to look at comparing averages over several lots to get a true estimate of accuracy
- **On average**, we expect on-farm estimates for lots to agree with the core tests within $\pm 0.2 \mu\text{m}$, but individual comparisons will vary by as much as $\pm 0.8 \mu\text{m}$. Similar performance is achieved by BOTH current on-farm systems. *
- Normally the agreement is better for the lots in the middle of the diameter range on any property. The finer lots will almost always have coarser results when core-tested, irrespective of which fleece testing method is used.



* Published data: Baxter, B. P. (2001). *On-farm classing of animals & fleeces with the OFDA2000 Wool Technology and Sheep Breeding* 49(2): 133-155; and Humphries, W., L. Vuckovic, W. A. Aspros, et al. (2001). *Sirolan Fleecescan: Performance and Benefits of In-Shed Individual Fleece Testing*. IWTO, CTF04, Shanghai

EASTERN OFFICE

Richard Manning
Phone +61 2 6766 3077
Fax +61 2 6766 6536
Mobile 0419 466 014
Email rmanning@i-activewool.com.au
132 North St
Tamworth NSW 2340
Australia

InteractiveWoolGroup

ACN 082 549 835
ABN 18 082 549 835

www.i-activewool.com.au

WESTERN OFFICE

Bill Johnston
Phone +61 8 9335 3495
Fax +61 8 9430 5815
Mobile 0407 986 105
Email wjohnston@i-activewool.com.au
4/65 Quarry St
Fremantle WA 6160
Australia